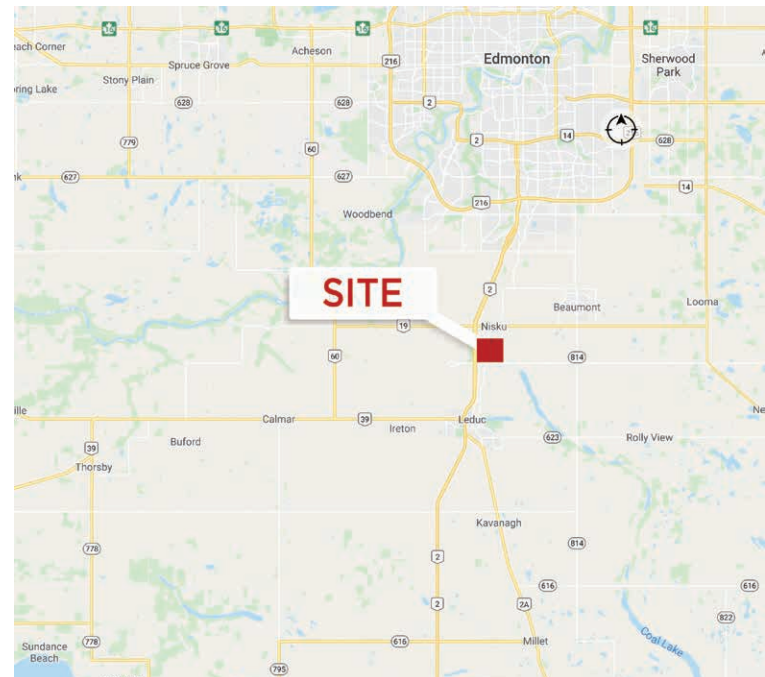




**Available Lots Ranging from
1.23 Acres - 5.46 Acres**

Property Highlights

- Sale Price: \$750,000.00 per Acre
- High exposure location to QEII Highway, Airport Road, and Sparrow Drive
- Commercial Service (CS) Zoning
- Primary uses include: automotive & equipment repair, sales and services, warehousing and storage, commercial retail and service, business office, convention facility, and personal and health care service.
- Discretionary uses include: auctioneering service, automotive/equipment body repair, commercial storage, recreational vehicle storage, indoor recreation, contractor service, and manufactured home, sales and service.



Andy Horvath
Partner
780 917 8338
andy.horvath@cwedm.com

Burke Smith
Partner
780 394 8766
leasesale@cwedm.com

Chad Edwards
Associate
780 394 8766
leasesale@cwedm.com

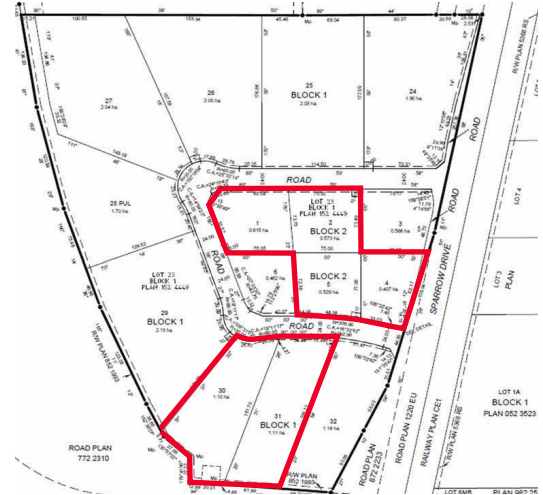
Alain Mulumba
Associate
780 420 1177
alain.mulumba@cwedm.com

CUSHMAN & WAKEFIELD
Edmonton
Suite 2700, TD Tower
10088 - 102 Avenue
Edmonton, AB T5J 2Z1
www.cwedm.com

Available Sizes

Lot	Size (Acres)	Price	Status
Block 1, Lot 30	2.72 Acres	\$2,040,000	Available
Block 1, Lot 31	2.74 Acres	\$2,055,000	Available
Block 2, Lot 1	1.52 Acres	\$1,140,000	Available
Block 2, Lot 2	1.42 Acres	\$1,102,500	Available
Block 2, Lot 4	1.23 Acres	\$922,500	Available
Block 2, Lot 5	1.31 Acres	\$982,500	Available

Site Plan



Aerial



Andy Horvath
Partner
780 917 8338
andy.horvath@cwedm.com

Burke Smith
Partner
780 394 8766
leasesale@cwedm.com

Chad Edwards
Associate
780 394 8766
leasesale@cwedm.com

Alain Mulumba
Associate
780 420 1177
alain.mulumba@cwedm.com

CUSHMAN & WAKEFIELD
Edmonton
Suite 2700, TD Tower
10088 - 102 Avenue
Edmonton, AB T5J 2Z1
www.cwedm.com

Cushman & Wakefield Edmonton is independently owned and operated / A Member of the Cushman & Wakefield Alliance. No warranty or representation, express or implied, is made to the accuracy or completeness of the information contained herein, and same is submitted subject to errors, omissions, change of price, rental or other conditions, withdrawal without notice, and to any special listing conditions imposed by the property owner(s). As applicable, we make no representation as to the condition of the property (or properties) in question. July 7, 2020