

NEW DEVELOPMENT



Brand New Retail & Office Space For Lease

Property Highlights

- Located in the heart of Beaumont
- New building with modern finishes
- Excellent exposure onto 50th Street
- Ample parking on-site
- Elevator equipped
- Join existing tenants; donair, pharmacy, boutique and neighbouring tenants; Jef's Café, Chartier, and Pizza Hut
- Situated just south of Edmonton, Beaumont has been marked one of the fastest growing communities in Canada

Map



Stefanie Orsini
Senior Associate, Retail
780 701 3290
stefanie.orsini@cwedm.com

Will Harvie
Associate, Office
780 702 9478
will.harvie@cwedm.com

Suite 2700, TD Tower
10088 102 Avenue
Edmonton, AB T5J 2Z1
www.cwedm.com

Retail Lease Details

One Unit Remaining

Unit Available:	Unit 15 - ±1,677 sq. ft.
Basic Rent:	\$30.00 per sq. ft.
Additional Rent:	\$10.00 per sq. ft. (2018 est.)
Tenant Improvement Allowance:	\$10.00 per sq. ft.
Available:	Immediately

Office Lease Details

Second Floor Office Space

Size Available:	1,296 - 1,695 sq. ft.
Basic Rent:	\$20.00 per sq. ft.
Additional Rent:	\$10.00 per sq. ft. (2018 est.)
Tenant Improvement Allowance:	\$10.00 per sq. ft.
Available:	Immediately



Stefanie Orsini

Senior Associate, Retail
780 701 3290
stefanie.orsini@cwedm.com

Will Harvie

Associate, Office
780 702 9478
will.harvie@cwedm.com

Suite 2700, TD Tower
10088 102 Avenue
Edmonton, AB T5J 2Z1
www.cwedm.com



**CUSHMAN &
WAKEFIELD**
Edmonton

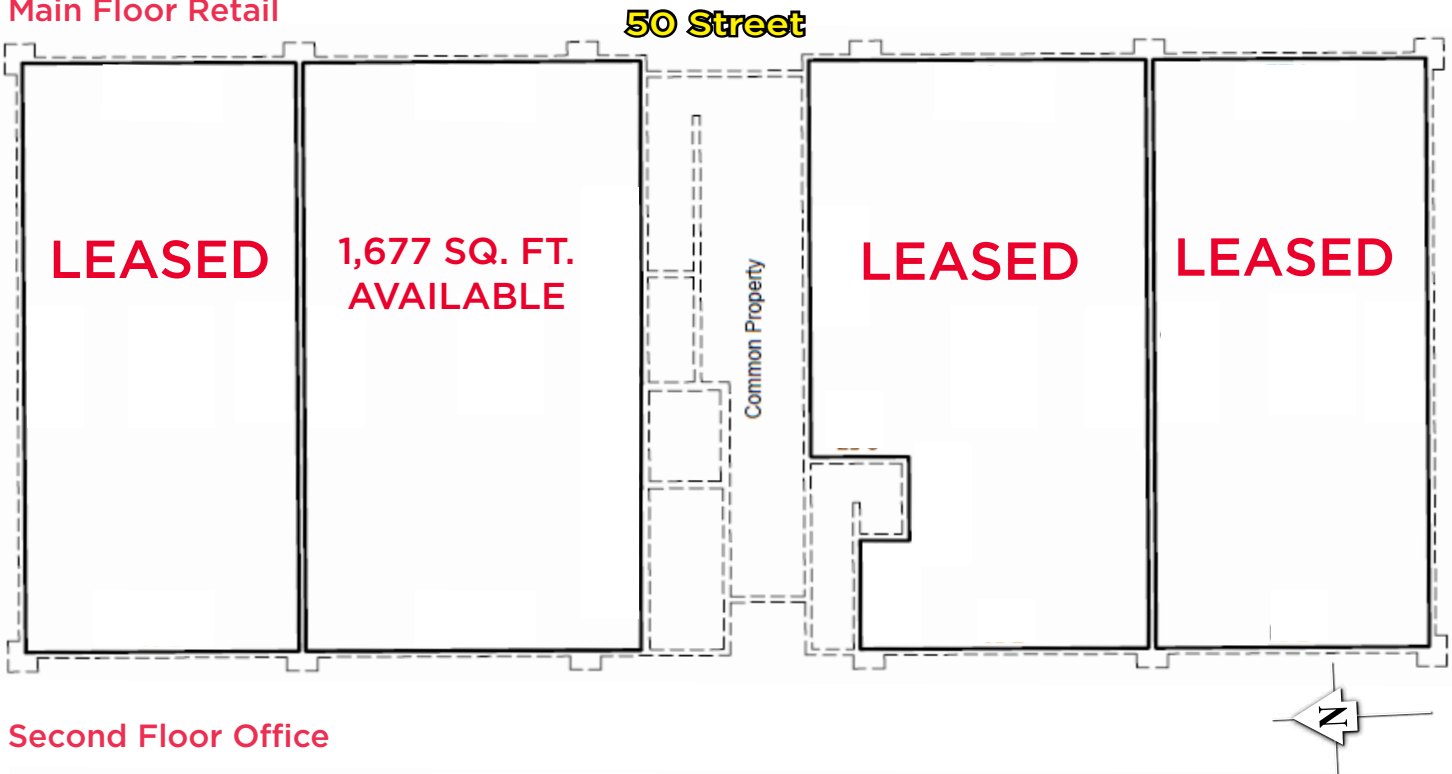
FOR LEASE

MAINA CENTREVILLE PHASE 2

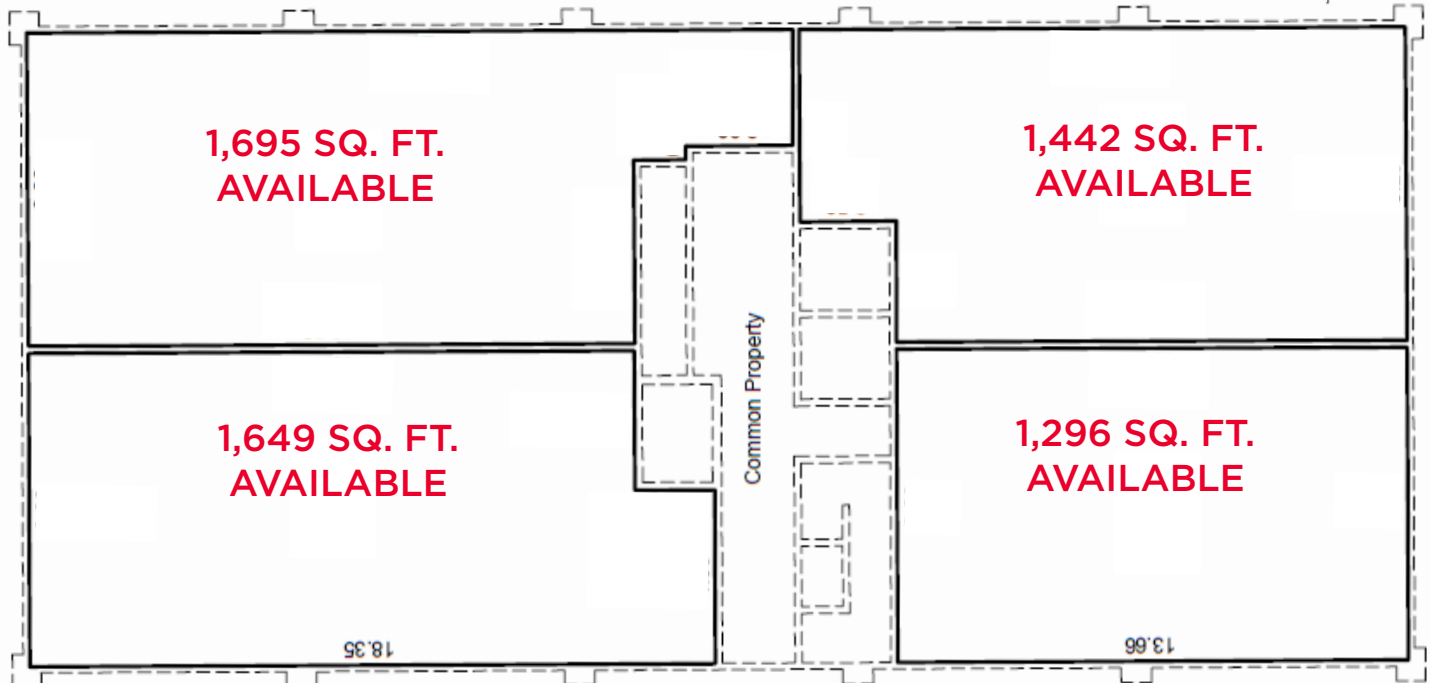
5010 - 50th Street, Beaumont, AB

Floor Plans

Main Floor Retail



Second Floor Office



Stefanie Orsini

Senior Associate, Retail
780 701 3290
stefanie.orsini@cwedm.com

Will Harvie

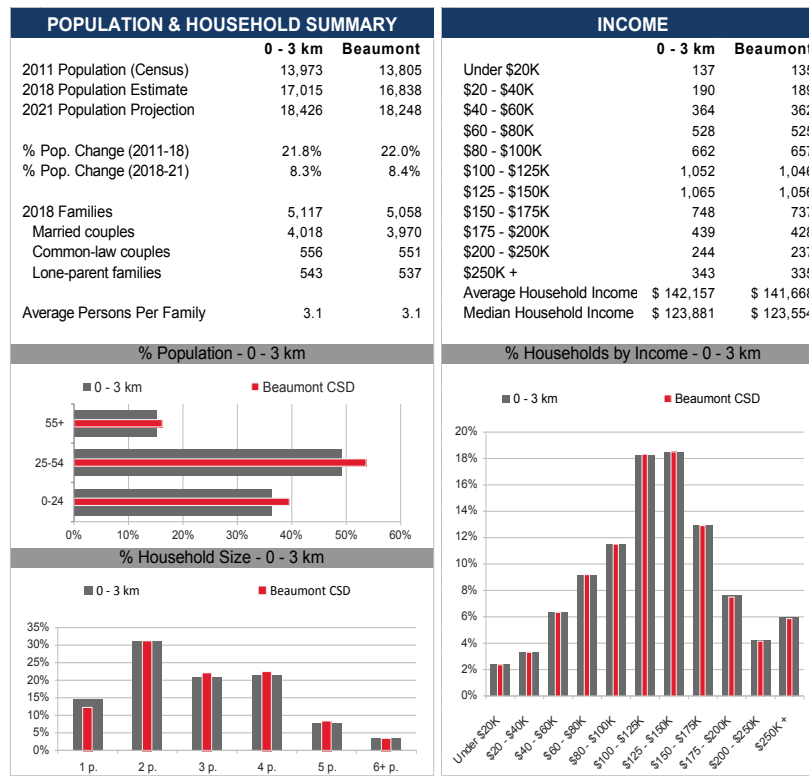
Associate, Office
780 702 9478
will.harvie@cwedm.com

Suite 2700, TD Tower
10088 102 Avenue
Edmonton, AB T5J 2Z1
www.cwedm.com

Aerial Map



Demographics



Stefanie Orsini
Senior Associate, Retail
780 701 3290
stefanie.orsini@cwedm.com

Will Harvie
Associate, Office
780 702 9478
will.harvie@cwedm.com

Suite 2700, TD Tower
10088 102 Avenue
Edmonton, AB T5J 2Z1
www.cwedm.com