



960 & 2,296 SQ. FT.

Property Highlights

- Excellent Southside location off the Whitemud Drive at 98th Street
- Well managed and maintained building
- Ample surface and covered parking
- Potential for exterior building signage
- Washroom upgrades recently completed, with lobby upgrades currently underway

Lease Details

AREAS AVAILABLE:	Unit 105 - 2,296 sq. ft. Unit 108 - 960 sq. ft.
ASKING BASE RENT:	Market
OPERATING COSTS:	\$14.03 per sq. ft. (2018)
INDUCEMENTS:	Negotiable
PARKING:	3 stalls/1,000 sq. ft. covered & uncovered surface parking at market rates

Nicholas Hrebien

Associate

780 917 8345

nicholas.hrebien@cwedmonton.com

Shane Asbell

Partner

780 917 8346

shane.asbell@cwedmonton.com

Scott Vreeland

Senior Associate

780 702 9477

scott.vreeland@cwedmonton.com

Jacob Dykstra

Associate

780 934 7769

jacob.dykstra@cwedmonton.com

Suite 2700, TD Tower

10088 102 Avenue

Edmonton, AB T5J 2Z1

www.cwedmonton.com



**CUSHMAN &
WAKEFIELD**
Edmonton

FOR LEASE

SPRINGWOOD COURT

4220 - 98 Street, Edmonton, Alberta



Nicholas Hrebien

Associate

780 917 8345

nicholas.hrebien@cwedm.com

Shane Asbell

Partner

780 917 8346

shane.asbell@cwedm.com

Scott Vreeland

Senior Associate

780 702 9477

scott.vreeland@cwedm.com

Jacob Dykstra

Associate

780 934 7769

jacob.dykstra@cwedm.com

Suite 2700, TD Tower
10088 102 Avenue
Edmonton, AB T5J 2Z1
www.cwedm.com

Cushman & Wakefield Edmonton is independently owned and operated / A Member of the Cushman & Wakefield Alliance. Cushman & Wakefield Copyright 2018. No warranty or representation, express or implied, is made to the accuracy or completeness of the information contained herein, and same is submitted subject to errors, omissions, change of price, rental or other conditions, withdrawal without notice, and to any special listing conditions imposed by the property owner(s). As applicable, we make no representation as to the condition of the property (or properties) in question.
May 4, 2018



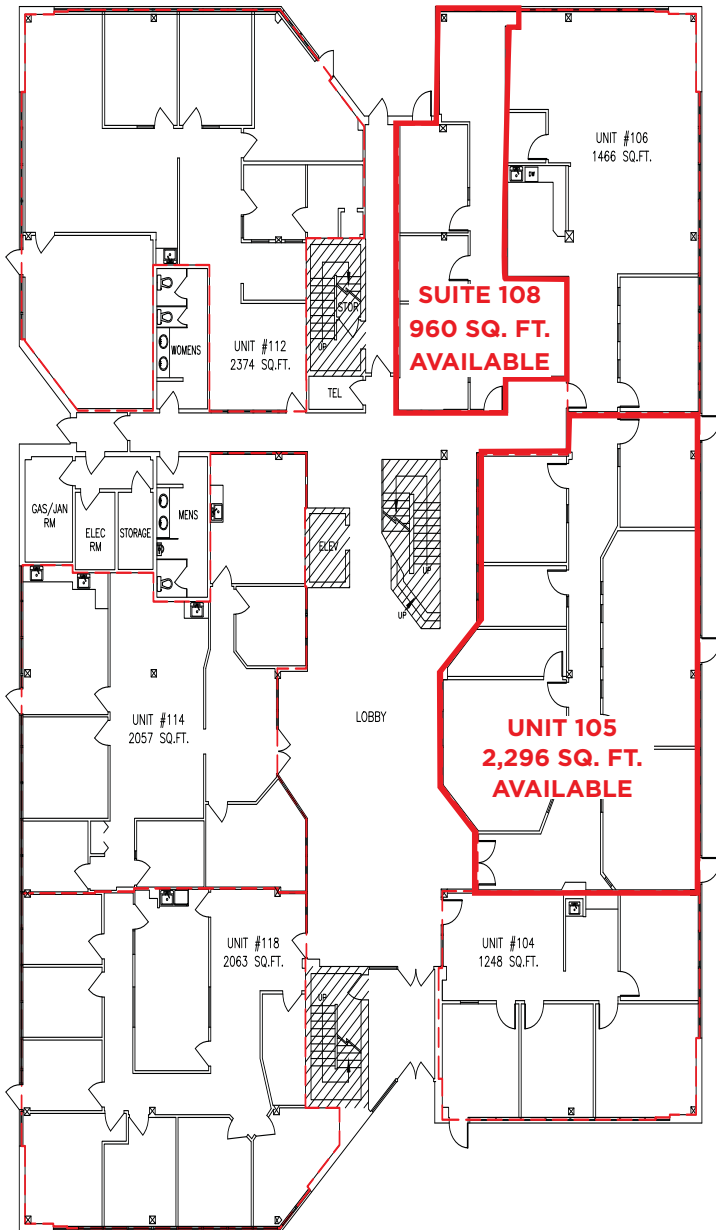
**CUSHMAN &
WAKEFIELD**
Edmonton

FOR LEASE

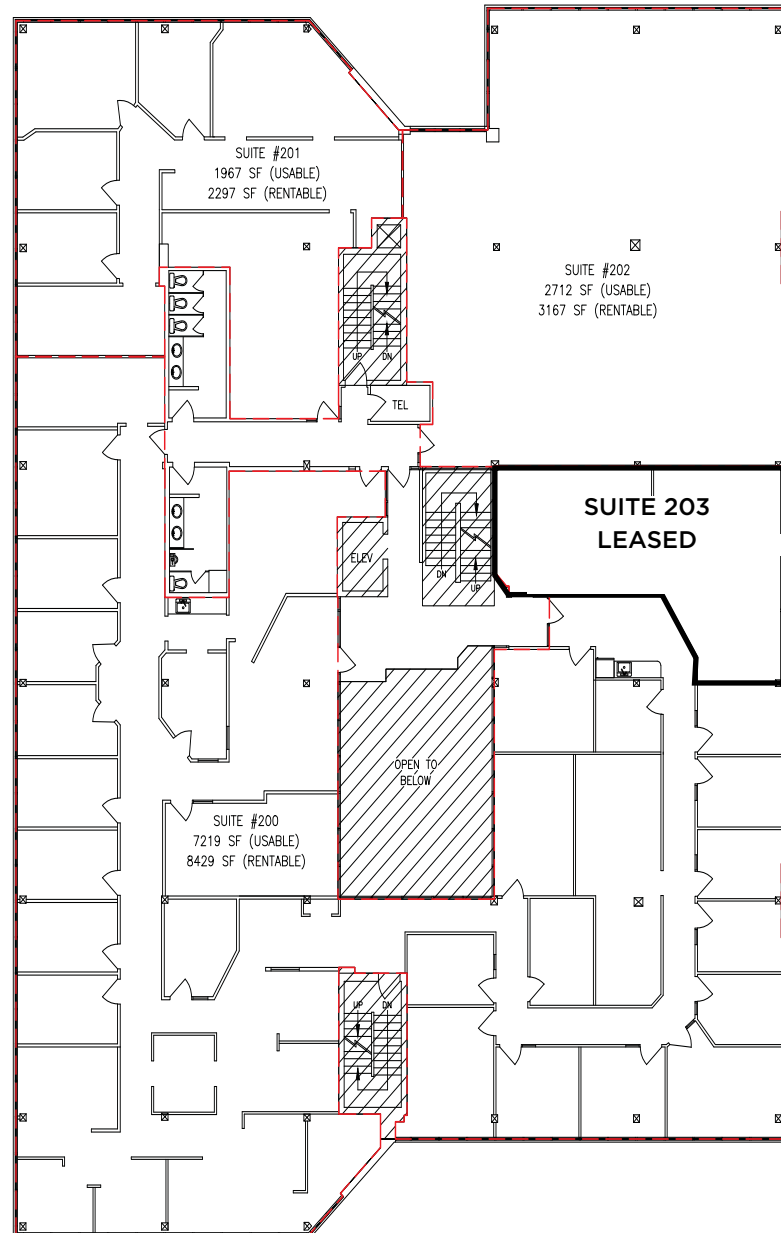
SPRINGWOOD COURT

4220 - 98 Street, Edmonton, Alberta

Main Floor Plan



Second Floor Plan



Nicholas Hrebien

Associate

780 917 8345

nicholas.hrebien@cwedmonton.com

Shane Asbell

Partner

780 917 8346

shane.asbell@cwedmonton.com

Scott Vreeland

Senior Associate

780 702 9477

scott.vreeland@cwedmonton.com

Jacob Dykstra

Associate

780 934 7769

jacob.dykstra@cwedmonton.com

Suite 2700, TD Tower

10088 102 Avenue

Edmonton, AB T5J 2Z1

www.cwedmonton.com