



**8.16 ACRES**  
**PRICE: \$500,000 PER ACRE**

### PROPERTY DETAILS

**LEGAL ADDRESS:** Plan 6048 KS, Lot 1

**ZONING:** IB - Industrial

**PRICE:** \$500,000 per acre

### PROPERTY FEATURES

- 8.16 acres
- 2.75 acres paved
- Access from Winterburn Road
- Direct exposure to Highway 16A, with 30,000 plus vehicles per day
- Available immediately
- Three (3) buildings on site
- Fenced and graveled yard
- Power, gas and telephone available

**Murry Osborne**  
Senior Associate  
780 917 8330  
[murry.osborne@cwedm.com](mailto:murry.osborne@cwedm.com)

Suite 2700, TD Tower  
10088 102 Avenue  
Edmonton, AB T5J 2Z1  
[www.cwedm.com](http://www.cwedm.com)



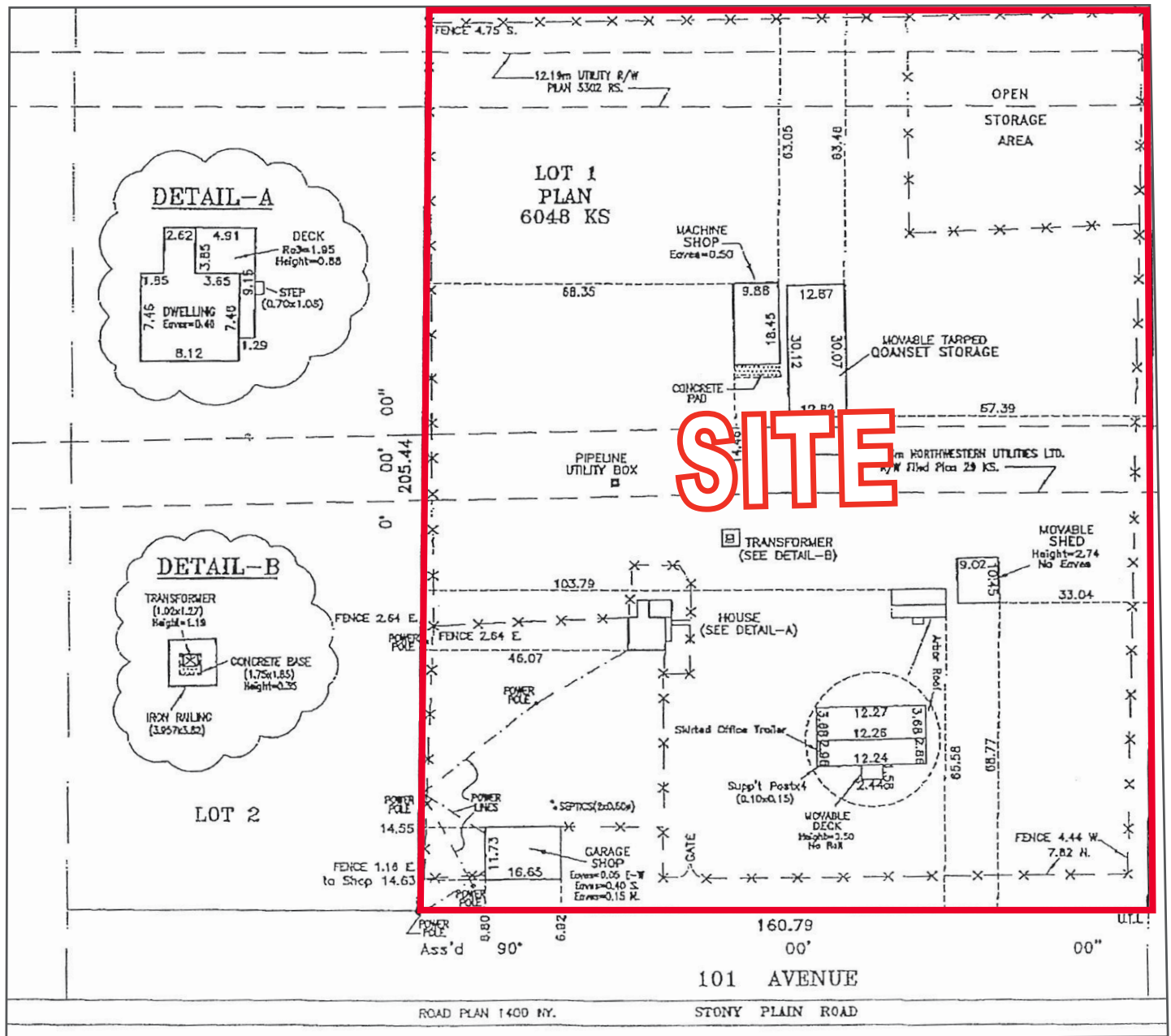
**CUSHMAN &  
WAKEFIELD**  
Edmonton

FOR SALE

## STONY PLAIN ROAD LAND

20804 Stony Plain Road, Edmonton, AB

### SITE PLAN



**Murry Osborne**  
Senior Associate  
780 917 8330  
murry.osborne@cwedm.com

Suite 2700, TD Tower  
10088 102 Avenue  
Edmonton, AB T5J 2Z1  
[www.cwedm.com](http://www.cwedm.com)