



**CUSHMAN &
WAKEFIELD**
Edmonton

FOR SALE OR LEASE

Potential Commercial Kitchen/Commissary Facility
10552-114 Street, Edmonton, AB



4,664 sq. ft. (Main Floor), 1,029 sq. ft. (Second Floor) and 1,195 sq. ft. (Basement)
Office/Warehouse Space For Sale/Lease

PROPERTY HIGHLIGHTS

- Large open space with minimal obstructions
- Excellent main floor office/warehouse space with 14' ceiling clear span
- Basic Rent: \$10.00 - \$12.00 per sq. ft.
- Overhead door at rear
- Located just north of downtown & the Oliver Districts
- Price Reduced: ~~\$2,000,000~~ **\$1,800,000**

LOCATOR MAP



Marino Padoan

Senior Associate
780 917 8340
marino.padoan@cwedm.com

Rick Botelho

Associate
780 702 6958
rick.botelho@cwedm.com

Suite 2700, TD Tower
10088 102 Avenue
Edmonton, AB T5J 2Z1
www.cwedm.com



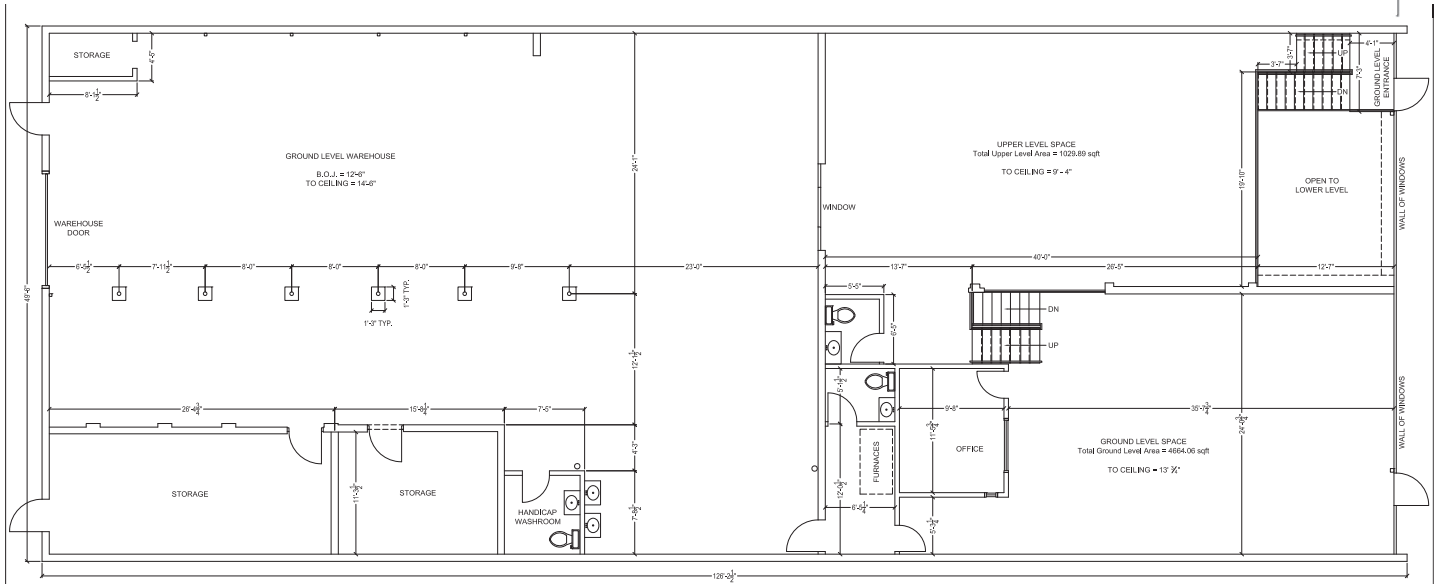
**CUSHMAN &
WAKEFIELD**
Edmonton

FOR SALE OR LEASE

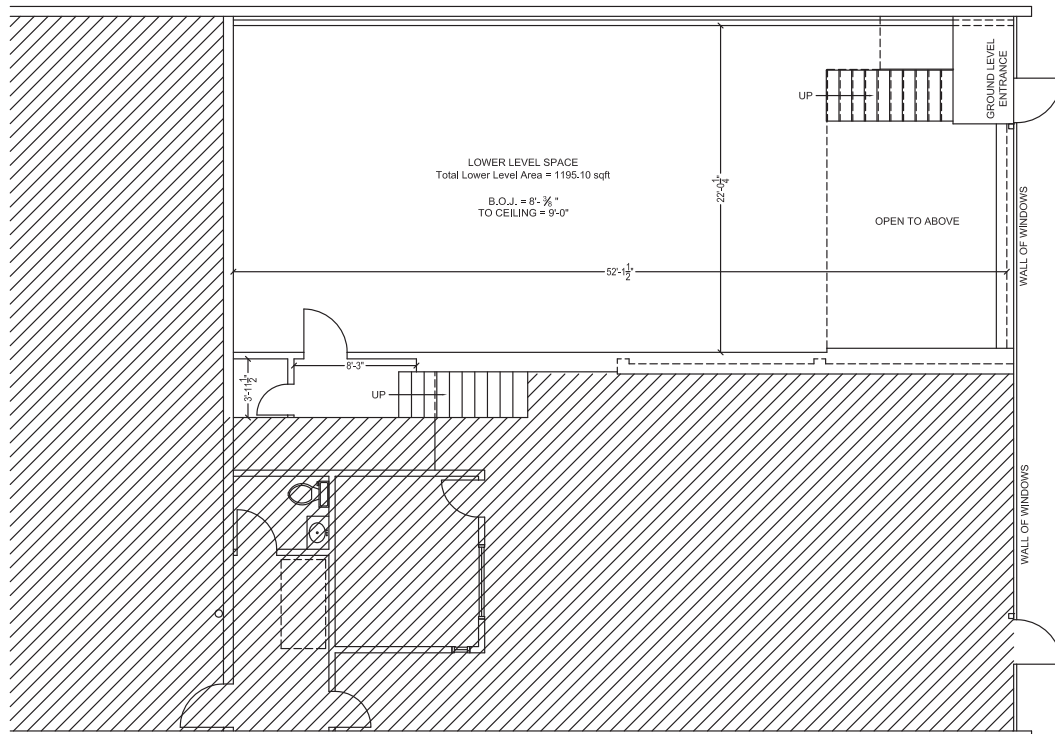
Potential Commercial Kitchen/Commissary Facility
10552-114 Street, Edmonton, AB

FLOOR PLANS

Main and Second Floors



Basement



Marino Padoan
Senior Associate
780 917 8340
marino.padoan@cwedm.com

Rick Botelho
Associate
780 702 6958
rick.botelho@cwedm.com

Suite 2700, TD Tower
10088 102 Avenue
Edmonton, AB T5J 2Z1
www.cwedm.com