

# 111 Town Crest Road

NE Corner Of Southfort Blvd. & Town Crest Road  
Fort Saskatchewan, AB



## Retail Bays From 1,200 Sq. Ft.

**TAKE ADVANTAGE OF THIS UNIQUE OPPORTUNITY  
IN THE CITY OF FORT SASKATCHEWAN!**

### Property Highlights

- Hotel anchored retail centre
- Great access to Highway 21
- Current population 24,569 (2016 municipal census)
- Several uses may be accommodated (medical, restaurant and more)
- Exposure along Town Crest Road
- Retail bays for sale or for lease from 1,200 sq. ft.

**John Shamey**

Associate  
780 702 8079  
john.shamey@cwedm.com

**Jamie Topham**

Partner  
780 702 4259  
jamie.topham@cwedm.com

**Stefanie Orsini**

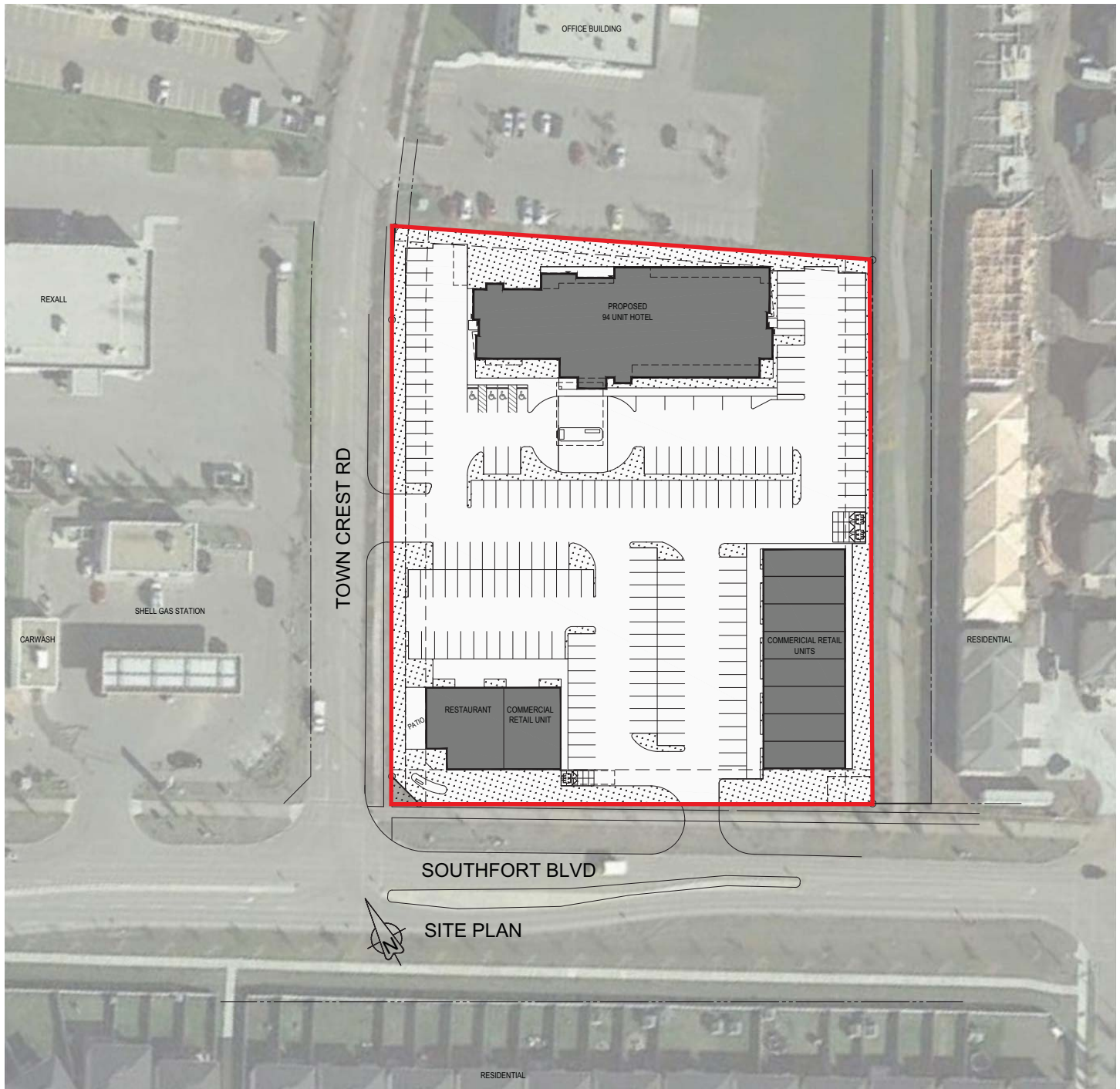
Senior Associate  
780 701 3290  
stefanie.orsini@cwedm.com

Suite 2700, TD Tower  
10088 102 Avenue  
Edmonton, AB T5J 2Z1  
[www.cwedm.com](http://www.cwedm.com)

# 111 Town Crest Road

NE Corner Of Southfort Blvd. & Town Crest Road  
Fort Saskatchewan, AB

## Site Plan



**John Shamey**  
Associate  
780 702 8079  
john.shamey@cwedm.com

**Jamie Topham**  
Partner  
780 702 4259  
jamie.topham@cwedm.com

**Stefanie Orsini**  
Senior Associate  
780 701 3290  
stefanie.orsini@cwedm.com

Suite 2700, TD Tower  
10088 102 Avenue  
Edmonton, AB T5J 2Z1  
[www.cwedm.com](http://www.cwedm.com)